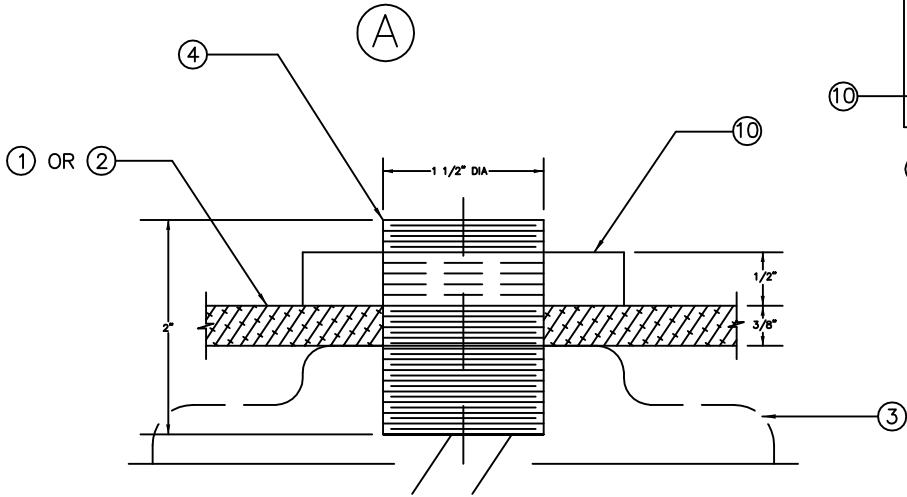
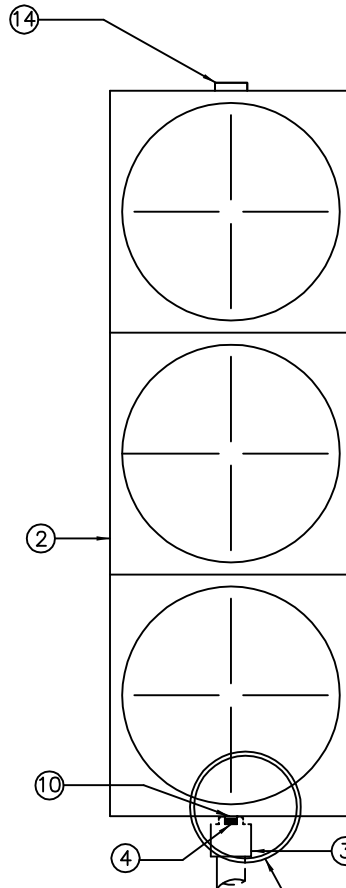
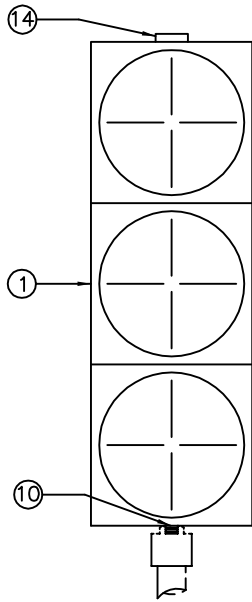


8" SIGNAL

12" SIGNAL



DETAIL I  
TYPICAL

DETAIL I

ASSEMBLY DESCRIPTION	
(A)	1 - WAY 8" SIGNAL C - POST MOUNTED
(B)	1 - WAY 12" SIGNAL C - POST MOUNTED

PART NO.	DESCRIPTION	QTY PER ASSEMBLY		MATERIAL DESCRIPTION
		(A)	(B)	
(1)	SIGNAL HEAD 8"	1	-	ALUM FEDERAL YELLOW
(2)	SIGNAL HEAD 12"	-	1	ALUM FEDERAL YELLOW
(3)	SLIPFITTER	1	1	CAST ALUM PER T.E. DWG 110-97
(4)	SHORT NIPPLE	1	1	1 1/2" ALUM ALLOY 6063-T6 SCH. 80
(10)	LOCKNUT	1	1	
(14)	PLUG	1	1	

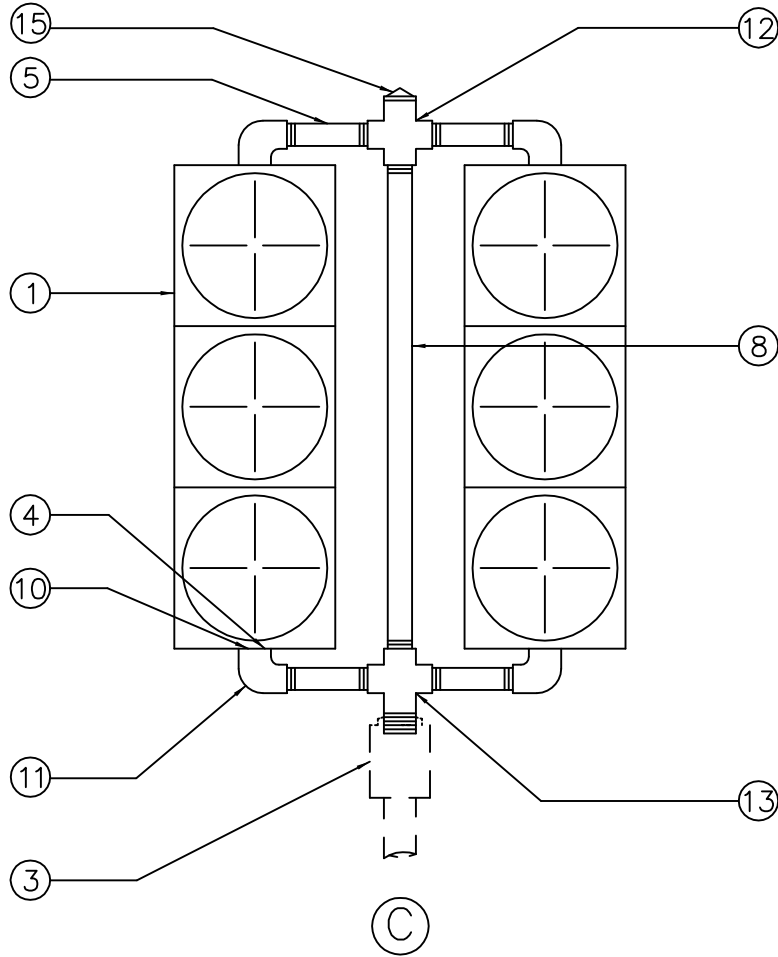
CITY OF PHILADELPHIA  
DEPARTMENT OF STREETS

# SIGNAL HEAD

DATE	11/07/05	SHEET 1 OF 6
REVISED	11/03/14	
APPROVED:		

# TE0601

8" x 8" SIGNAL



ASSEMBLY DESCRIPTION	
©	2 - WAY 8" X 8" SIGNAL C - POST MOUNTED

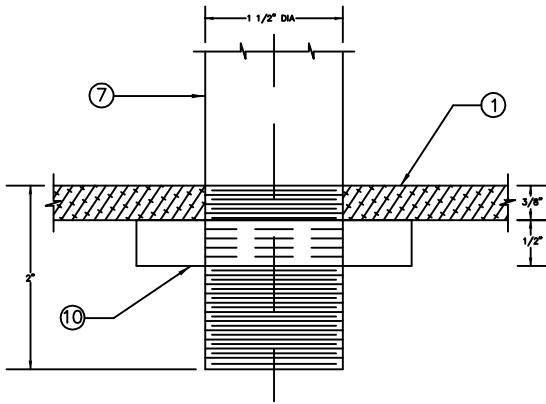
PART NO.	DESCRIPTION	QTY PER ASSEMBLY	MATERIAL DESCRIPTION
		©	
①	SIGNAL HEAD 8"	2	ALUM FEDERAL YELLOW
③	SLIPFITTER	1	CAST ALUM PER T.E. DWG 110-97
④	SHORT NIPPLE	4	1 1/2 " ALUM ALLOY 6063-T6 SCH. 80
⑤	ALUM PIPE 6"	4	1 1/2 " ALUM ALLOY 6063-T6 SCH. 40
⑧	CENTER PIPE 36"	1	1 1/2 " ALUM ALLOY 6063-T6 SCH. 80
⑩	LOCKNUT	4	
⑪	ELBOW	4	
⑫	CROSS-FULL THREADED	1	
⑬	CROSS-HORIZ THREADED W/ SS SET SCREW	1	
⑮	PINNACLE	1	

CITY OF PHILADELPHIA  
DEPARTMENT OF STREETS

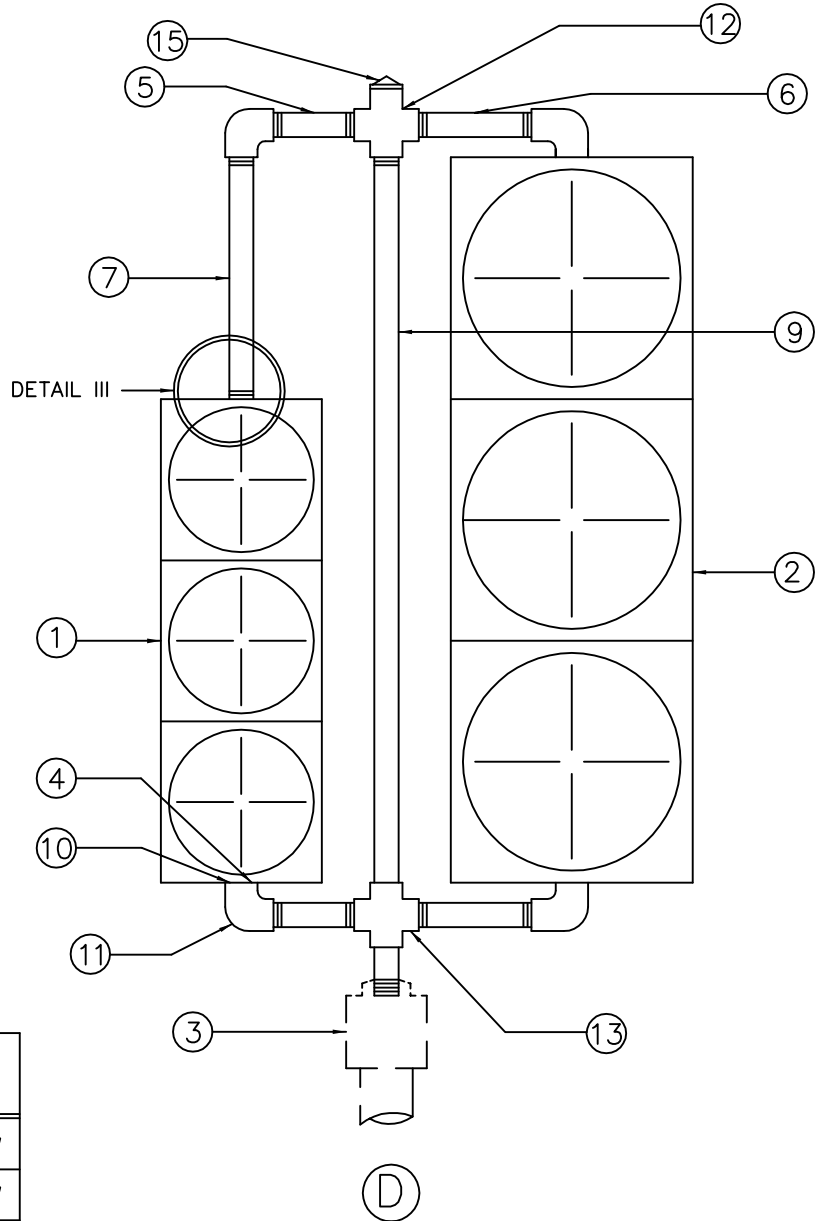
SIGNAL HEAD

DATE	11/07/05	SHEET 2 OF 6	TE0601
REVISED	11/03/14		
APPROVED:			

# 8" x 12" SIGNAL



DETAIL III



ASSEMBLY DESCRIPTION	
①	2 - WAY 8" X 12" SIGNAL C - POST MOUNTED

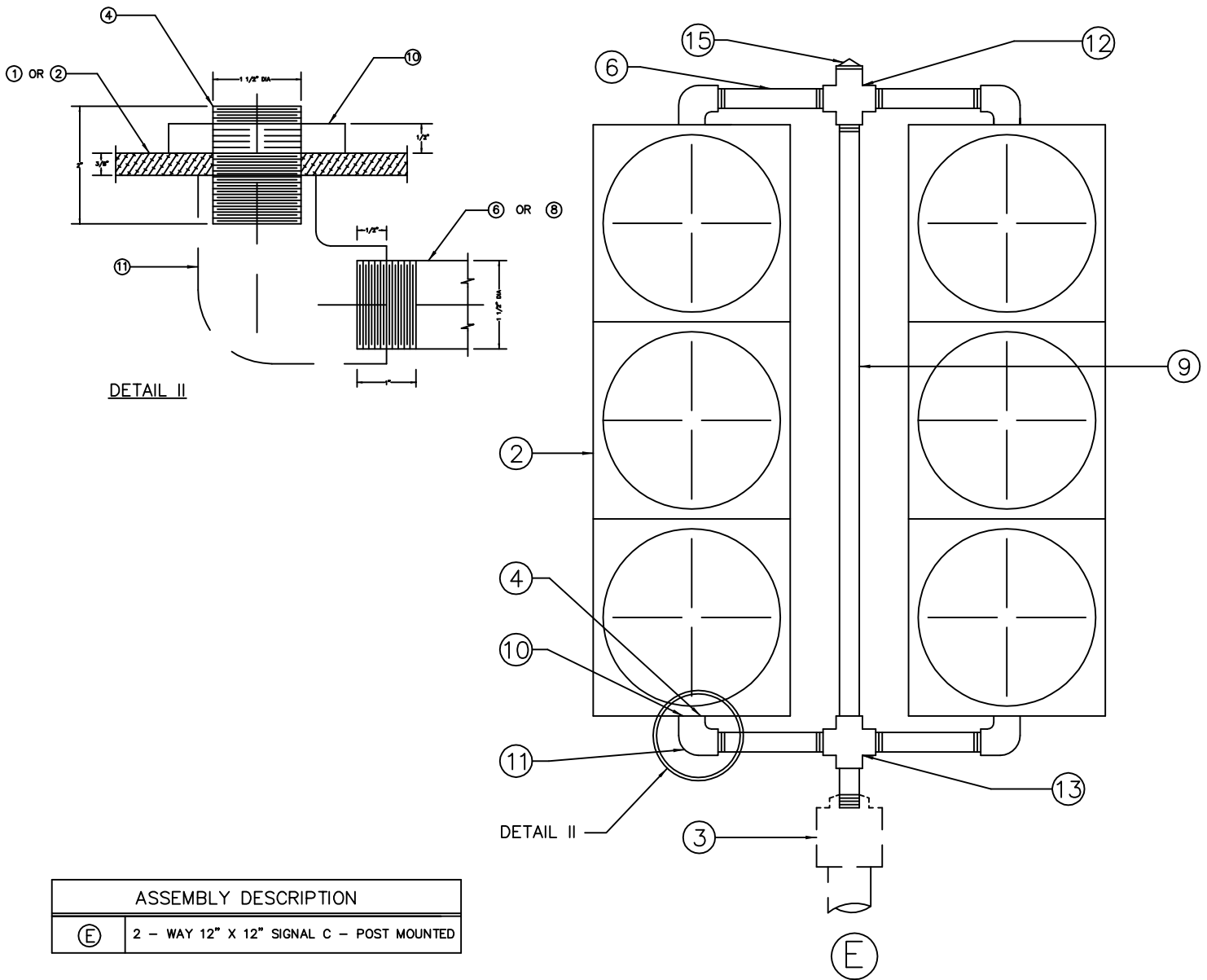
PART NO.	DESCRIPTION	QTY PER ASSEMBLY ①	MATERIAL DESCRIPTION
①	SIGNAL HEAD 8"	1	ALUM FEDERAL YELLOW
②	SIGNAL HEAD 12"	1	ALUM FEDERAL YELLOW
③	SLIPFITTER	1	CAST ALUM PER T.E. DWG 110-97
④	SHORT NIPPLE	3	1 1/2 " ALUM ALLOY 6063-T6 SCH. 80
⑤	ALUM PIPE 6"	2	1 1/2 " ALUM ALLOY 6063-T6 SCH. 40
⑥	ALUM PIPE 8"	2	1 1/2 " ALUM ALLOY 6063-T6 SCH. 40
⑦	ALUM PIPE 12" 2" THREAD AT ONE END	1	1 1/2 " ALUM ALLOY 6063-T6 SCH. 80
⑨	CENTER PIPE 48"	1	
⑩	LOCKNUT	4	
⑪	ELBOW	4	
⑫	CROSS-FULL THREADED	1	
⑬	CROSS-HORIZ THREADED W/ SS SET SCREW	1	
⑮	PINNACLE	1	

CITY OF PHILADELPHIA  
DEPARTMENT OF STREETS

## SIGNAL HEAD

DATE	11/07/05	SHEET 3 OF 6	TE0601
REVISED	11/03/14		
APPROVED:			

# 12" x 12" SIGNAL



ASSEMBLY DESCRIPTION	
(E)	2 - WAY 12" X 12" SIGNAL C - POST MOUNTED

PART NO.	DESCRIPTION	QTY PER ASSEMBLY	MATERIAL DESCRIPTION
		(E)	
(2)	SIGNAL HEAD 12"	2	ALUM FEDERAL YELLOW
(3)	SLIPFITTER	1	CAST ALUM PER T.E. DWG 110-97
(4)	SHORT NIPPLE	4	1 1/2" ALUM ALLOY 6063-T6 SCH. 80
(6)	ALUM PIPE 8"	4	1 1/2" ALUM ALLOY 6063-T6 SCH. 40
(9)	CENTER PIPE 48"	1	1 1/2" ALUM ALLOY 6063-T6 SCH. 80
(10)	LOCKNUT	4	
(11)	ELBOW	4	
(12)	CROSS-FULL THREADED	1	
(13)	CROSS-HORIZ THREADED W/ SS SET SCREW	1	
(15)	PINNACLE	1	

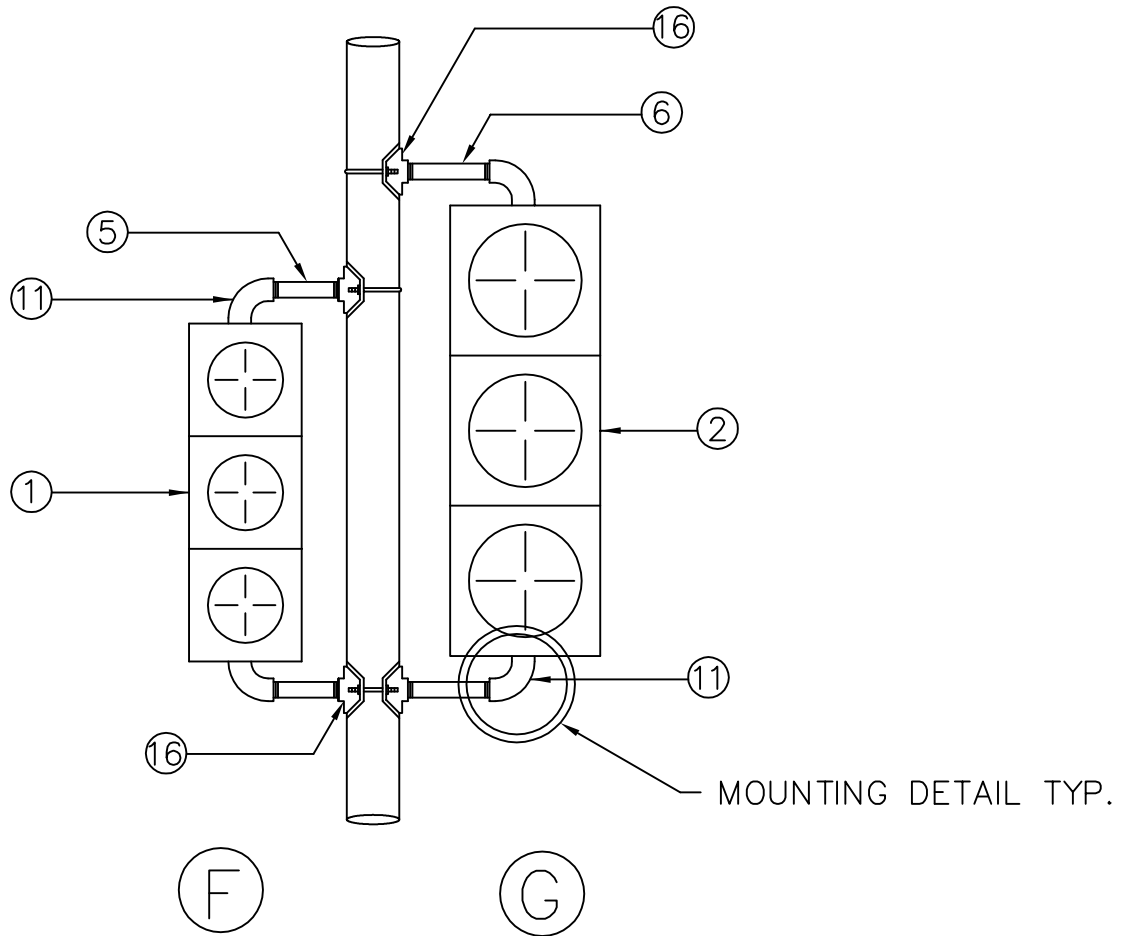
CITY OF PHILADELPHIA  
DEPARTMENT OF STREETS

## SIGNAL HEAD

DATE	11/07/05	SHEET 4 OF 6	TE0601
REVISED	11/03/14		
APPROVED:			

8" SIGNAL

12' SIGNAL



ASSEMBLY DESCRIPTION	
(F)	1 - WAY 8" SIGNAL 20' C - POST MOUNTED
(G)	1 - WAY 12" SIGNAL 20' C - POST MOUNTED

PART NO.	DESCRIPTION	QTY PER ASSEMBLY		MATERIAL DESCRIPTION
		(F)	(G)	
(1)	SIGNAL HEAD 8"	1	-	
(2)	SIGNAL HEAD 12"	-	1	
(4)	SHORT NIPPLE	2	2	
(5)	ALUM PIPE 6"	2	-	
(6)	ALUM PIPE 8"	-	2	
(10)	LOCKNUT	2	2	
(11)	ELBOW	2	2	
(16)	MOUNTING BRACKET W/U - BOLT 20' C - POST	2	2	

CITY OF PHILADELPHIA  
DEPARTMENT OF STREETS

SIGNAL HEAD

DATE 11/07/05 SHEET 5 OF 6

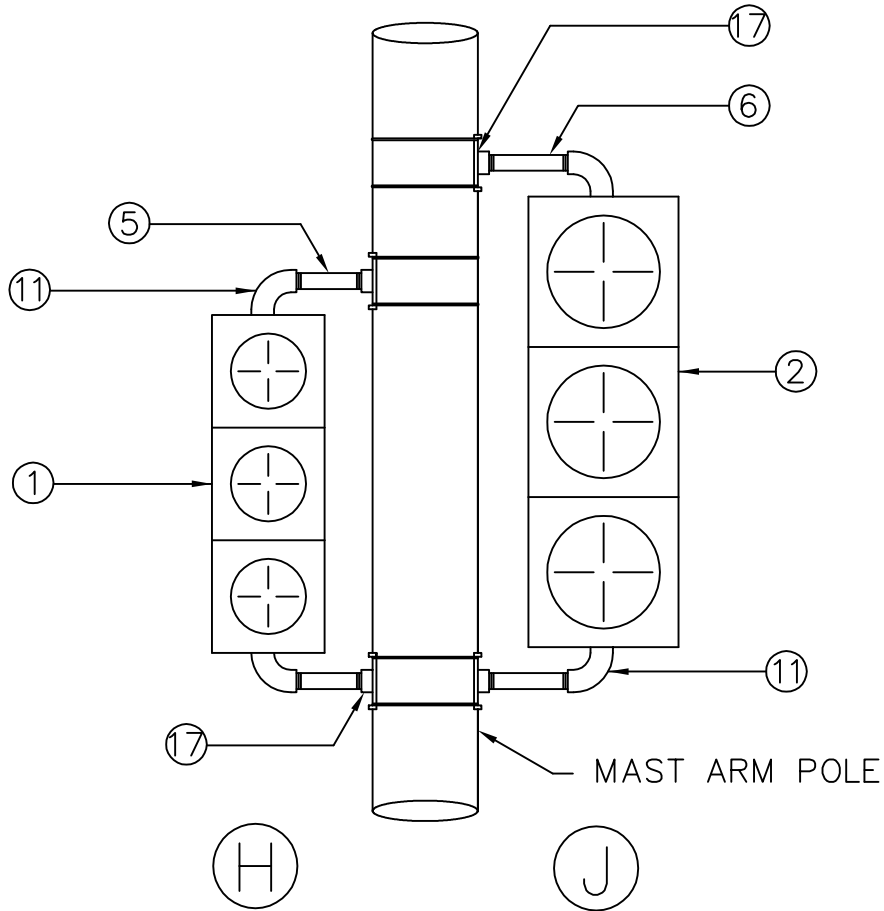
REVISED 11/03/14

APPROVED:

TE0601

8" SIGNAL

12' SIGNAL



ASSEMBLY DESCRIPTION	
(H)	1 - WAY 8" SIGNAL MAST ARM MOUNTED
(J)	1 - WAY 12" SIGNAL MAST ARM MOUNTED

PART NO.	DESCRIPTION	QTY PER ASSEMBLY		MATERIAL DESCRIPTION
		(H)	(J)	
(1)	SIGNAL HEAD 8"	1	-	
(2)	SIGNAL HEAD 12"	-	1	
(4)	SHORT NIPPLE	2	2	
(5)	ALUM PIPE 6"	2	-	
(6)	ALUM PIPE 8"	-	2	
(10)	LOCKNUT	2	2	
(11)	ELBOW	2	2	
(17)	MOUNTING BRACKET W/SS BANDING MASTARM POLE	2	2	

CITY OF PHILADELPHIA  
DEPARTMENT OF STREETS

SIGNAL HEAD

DATE 11/07/05 SHEET 6 OF 6

REVISED 11/03/14

APPROVED:

TE0601