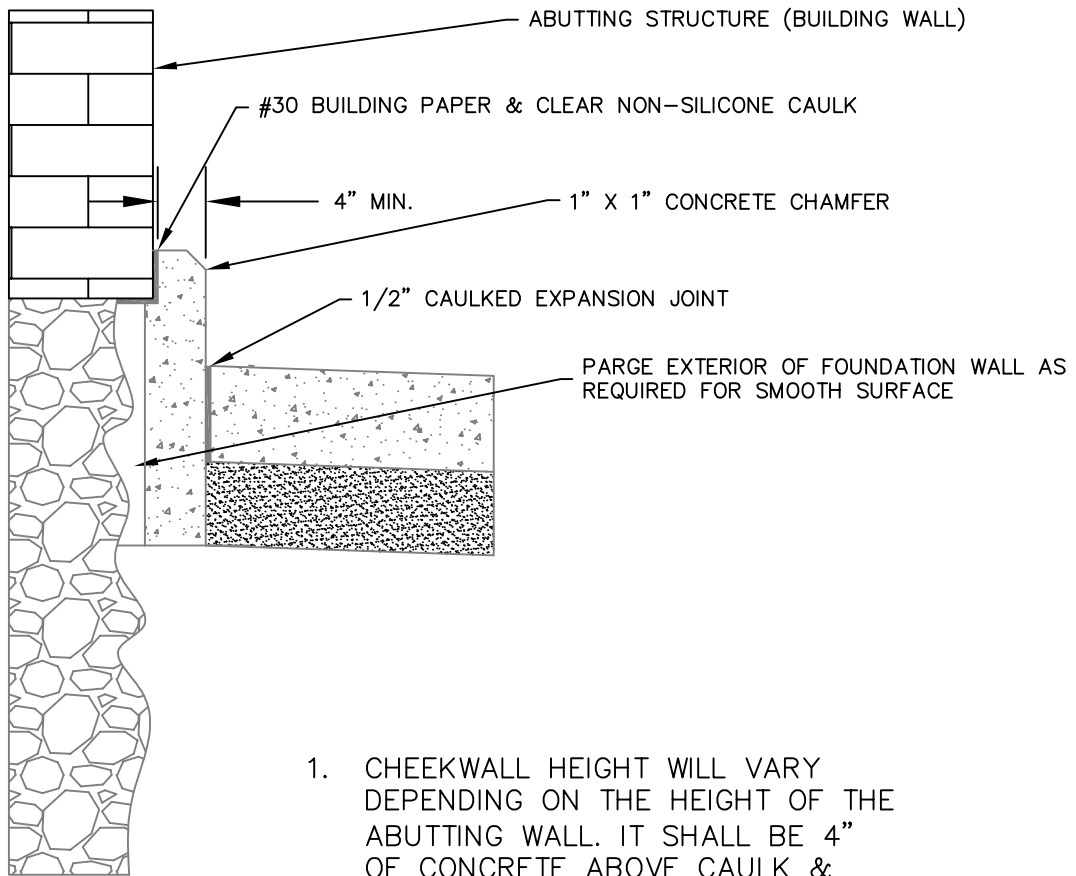


1. CHEEKWALL HEIGHT WILL VARY DEPENDING ON THE HEIGHT OF THE ABUTTING WALL. IT SHALL BE 4" OF CONCRETE ABOVE CAULK & BUILDING PAPER # 30.
2. CAULK SHOULD BE HIGH-QUALITY OIL-BASED CAULK (NON-SILICONE).
3. CANT TOP OF CHEEK WALL TO SHED WATER TO FOOTWAY.

<p><i>CITY OF PHILADELPHIA</i> DEPARTMENT OF STREETS</p> <p style="font-size: 1.2em;">CONCRETE CHEEK WALL</p>			
DATE	12/08/14	SHEET 1 OF 1	
REVISED	3/01/15		
APPROVED: V.L.F.			SC0109A



1. CHEEKWALL HEIGHT WILL VARY DEPENDING ON THE HEIGHT OF THE ABUTTING WALL. IT SHALL BE 4" OF CONCRETE ABOVE CAULK & BUILDING PAPER # 30.
2. CAULK SHOULD BE HIGH-QUALITY OIL-BASED CAULK (NON-SILICONE).
3. CANT TOP OF CHEEK WALL TO SHED WATER TO FOOTWAY.

<p><i>CITY OF PHILADELPHIA</i> DEPARTMENT OF STREETS</p> <p>CONCRETE CHEEK WALL</p>			
DATE	12/08/14	SHEET 1 OF 1	
REVISED	3/01/15		SC0109B
APPROVED: V.L.F.			