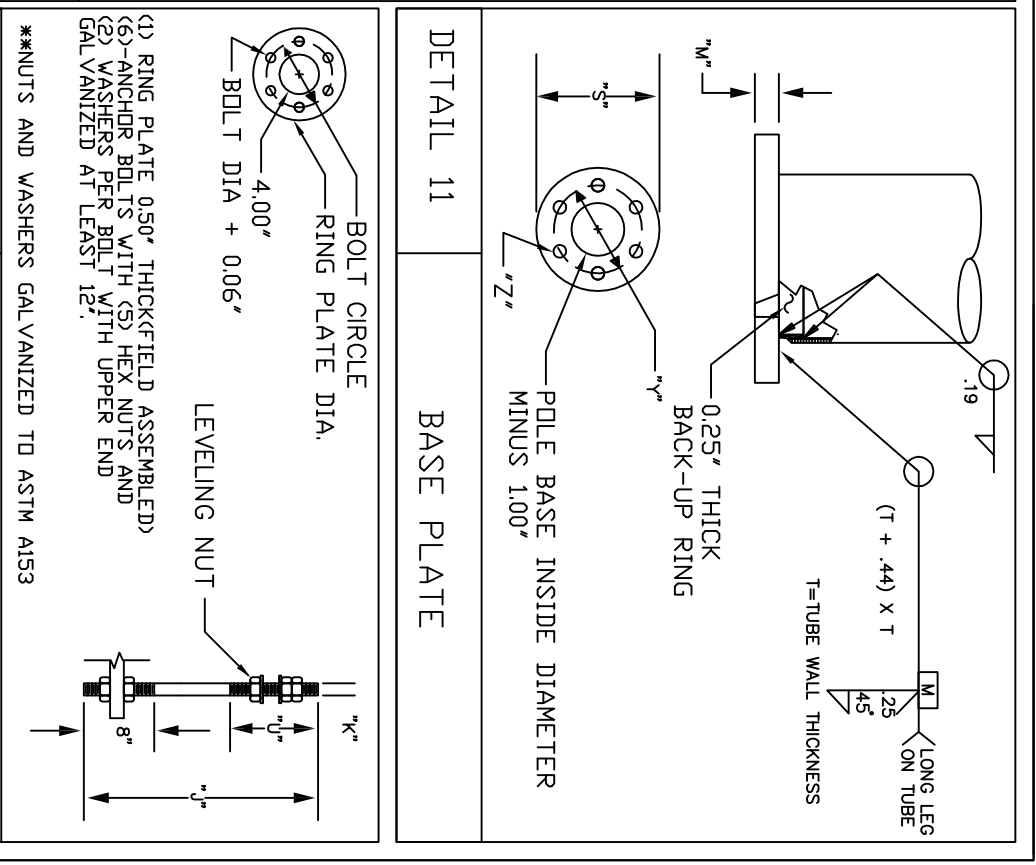
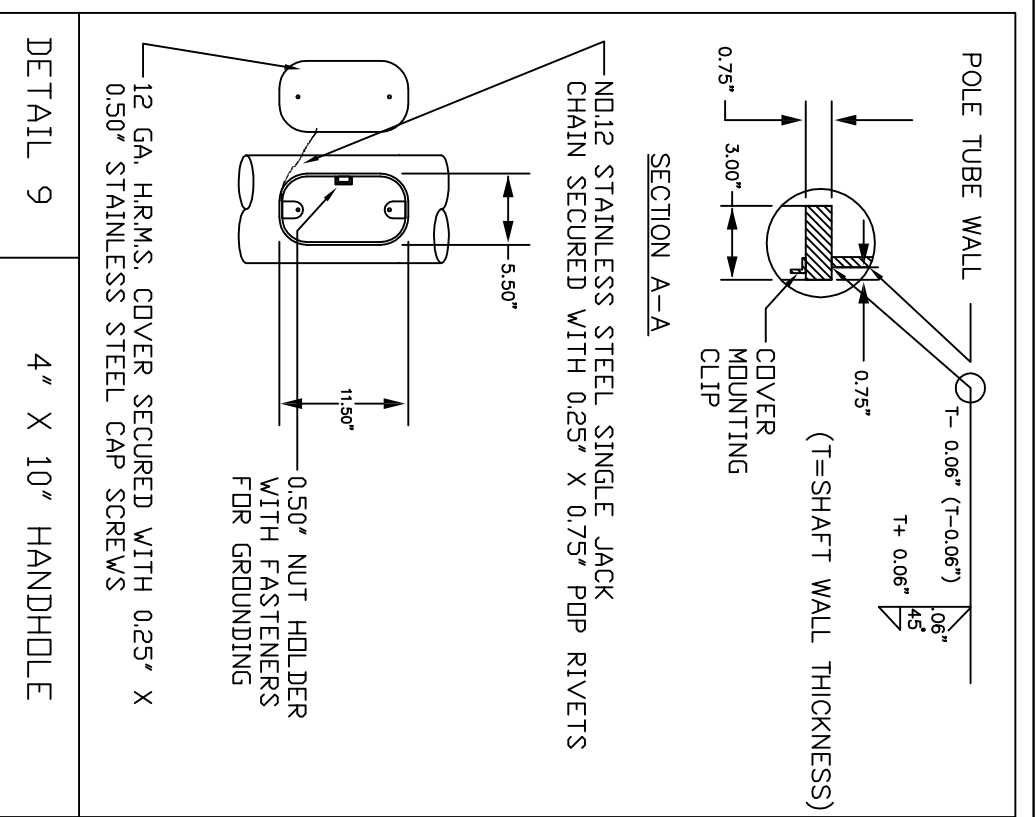
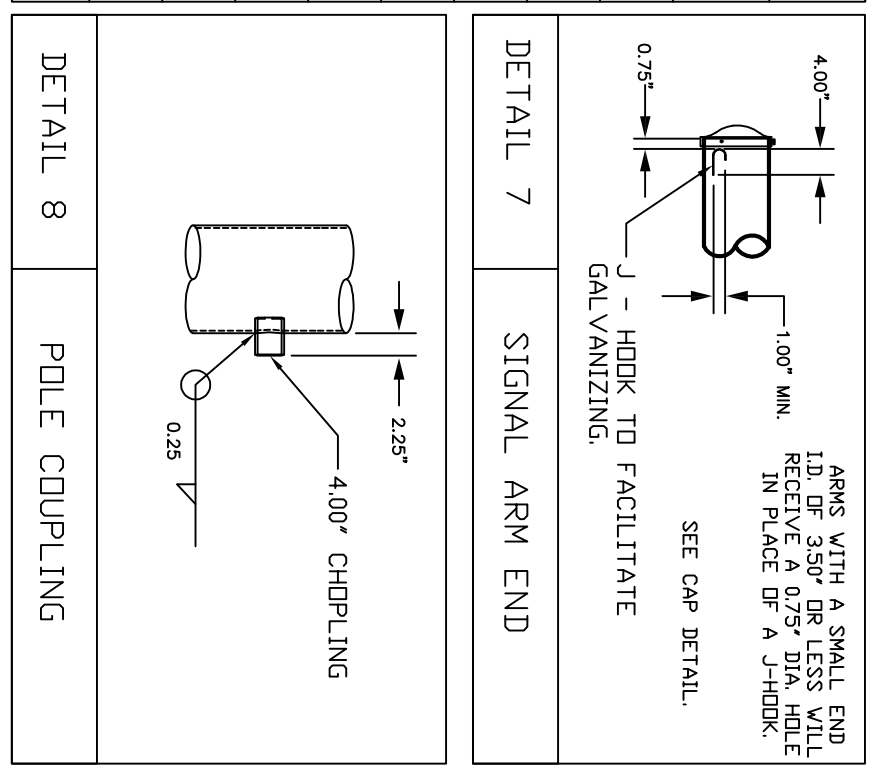


DETAIL 6 SIGNAL ARM ATTACHMENT

SIGNAL ARM ATTACHMENT DATA

ARM SPAN	"A"	"B"	"C"	"D"	"H"
0'-10'	14.50"	12.00"	2.00"	0.250"	1.00" X 5.75"
11'-20'	17.25"	14.00"	2.00"	0.250"	1.25" X 6.00"
21'-25'	17.75"	14.50"	2.00"	0.313"	1.25" X 6.00"
26'-30'	18.75"	15.50"	2.50"	0.375"	1.25" X 7.00"
31'-35'	20.25"	17.00"	2.50"	0.375"	1.25" X 7.00"
36'-40'	20.75"	17.50"	2.50"	0.500"	1.25" X 7.00"
41'-45'	21.75"	18.50"	2.50"	0.500"	1.25" X 7.00"
46'-50'	20.75"	17.50"	2.50"	0.625"	1.25" X 7.00"
51'-60'	23.75"	20.00"	2.50"	0.625"	1.50" X 7.25"



ANCHOR BOLT DESIGN (DETAIL 10)

ARM SPAN	QTY.	BOLT DIA.	LENGTH	BOLT CIRCLE	BOLT HOLE
0'-10'	6	1.75"	35.00"	21.00"	2.00"
>0'-15'	6	1.75"	35.00"	21.00"	2.00"
>15'-20'	6	1.75"	35.00"	21.00"	2.00"
>20'-25'	6	1.75"	35.00"	21.00"	2.00"
>25'-30'	6	1.75"	35.00"	21.00"	2.00"
>30'-35'	6	1.75"	35.00"	21.00"	2.00"
>35'-40'	6	2.00"	40.00"	24.00"	2.25"
>40'-45'	6	2.00"	40.00"	24.00"	2.25"
>45'-50'	6	2.00"	40.00"	24.00"	2.25"
>50'-60'	6	2.00"	40.00"	24.00"	2.25"

CITY OF PHILADELPHIA
DEPARTMENT OF STREETS

MAST ARM DETAILS

DATE: 11/27/14 SHEET 2 OF 2

REVISED 3/01/15

APPROVED: V.L.F.

TE0501