

MATERIAL DATA			FINISH DATA	
COMPONENT	ASTM DESIGNATION	MIN. YIELD (KSI)		
POLE SHAFT	A595 GR. A	55	BASE COAT: HOT DIPPED GALVANIZED TO ASTM SPEC: A123	
POLE BASE	A36	36	FINISH COAT: TGIC OR URETHANE POLYESTER POWDER	
GALVANIZING—HARWARE	A153		COLOR: FED PARK SERVICE BROWN (FED COLOR 595A-20040)	
ANCHOR BOLTS	BY OTHERS			
ARM SHAFT	2" SCHD. 40			
ARM CONNECTING BOLTS	A325			

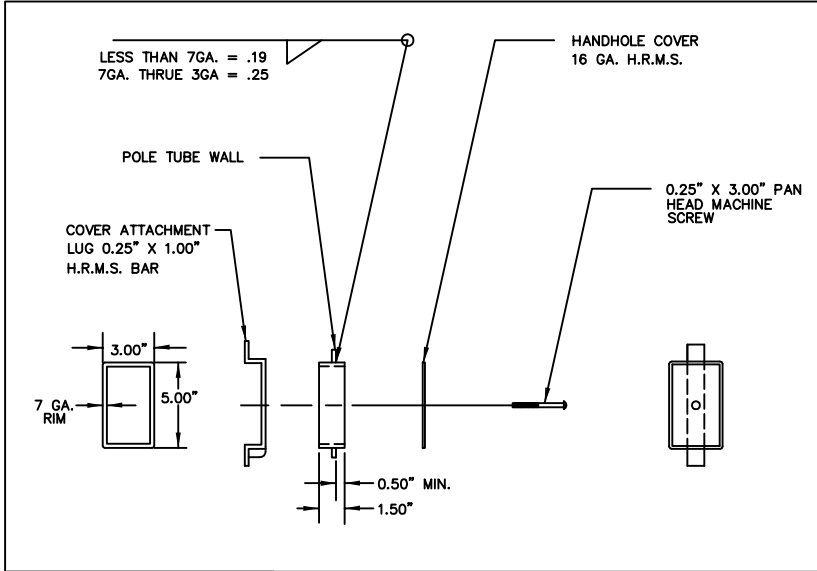
CITY OF PHILADELPHIA
 DEPARTMENT OF STREETS

D — POLE

DATE	11/07/05	SHEET 1 OF 2	TE0201
REVISED	3/01/15		
APPROVED:	V.L.F.		

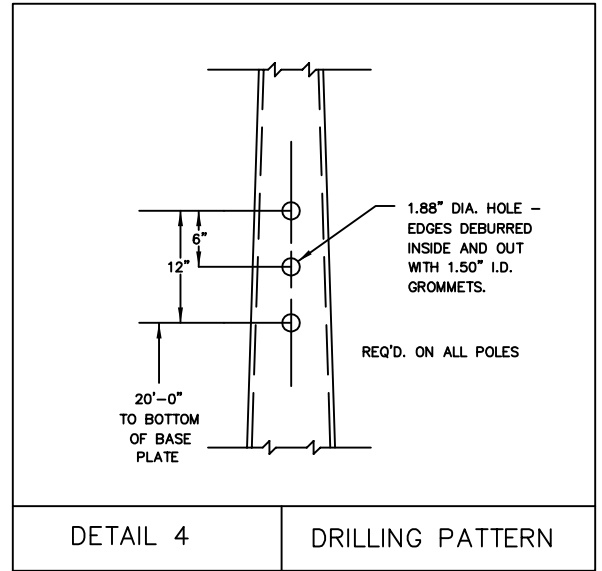
POLE DATA

ITEM	QTY.	POLE TUBE				POLE BASE				ANCHOR BOLT			
		BASE DIA. (IN)	TOP DIA. (IN)	LENGTH (FT)	GAUGE OR THICK (IN)	SQUARE "S" (IN)	BOLT CIRCLE "Y" (IN)	THK. "M" (IN)	HOLE/SLOT "Z" (IN)	DIA. "K" (IN)	LENGTH "J" (IN)	HOOK "H" (IN)	THREAD LENGTH "U" (IN)
1		10.00	5.80	30.00	7	17.00	16.50	1.25	1.50	1.25	EXISTING OR BY OTHERS		



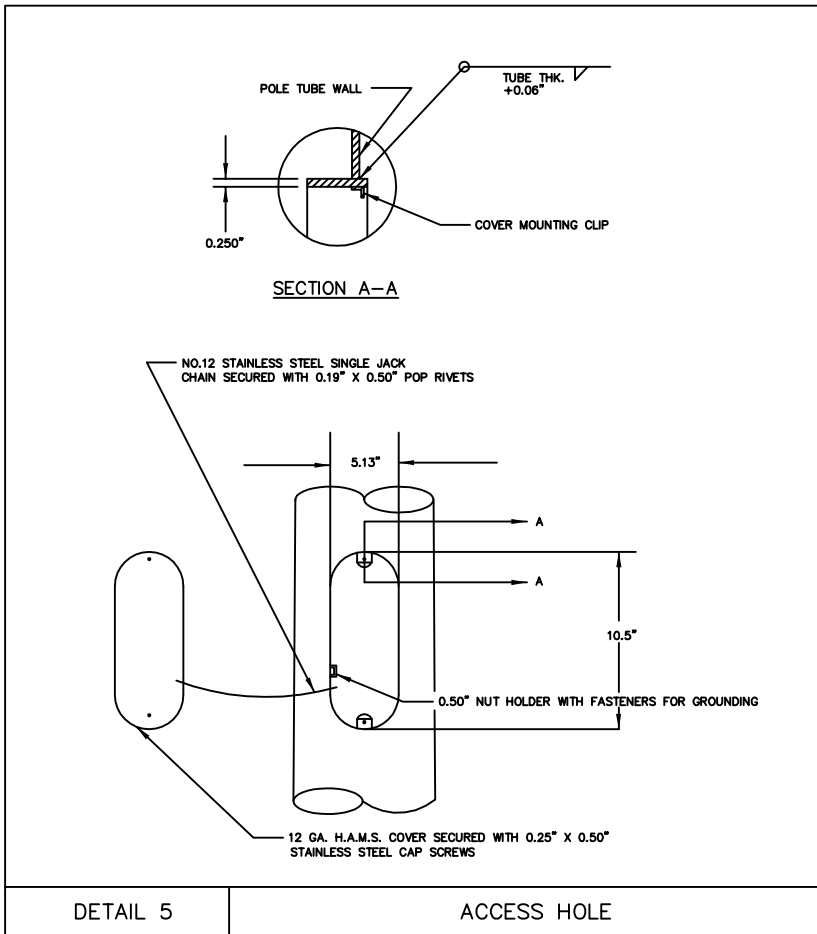
DETAIL 3

EXTENSION HANDHOLE



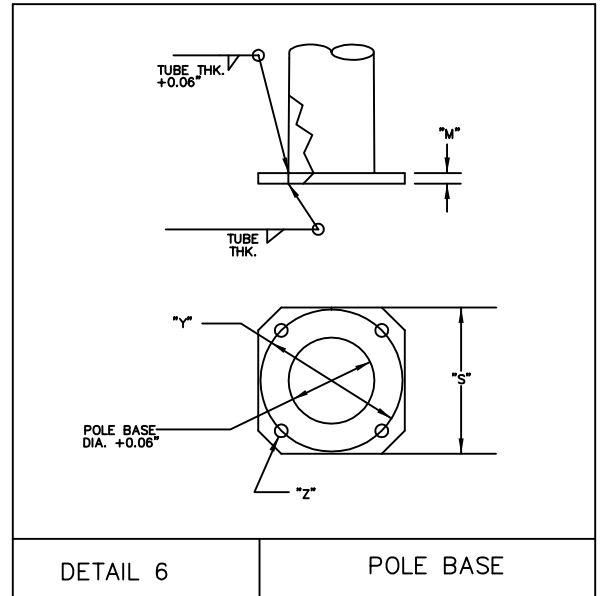
DETAIL 4

DRILLING PATTERN



DETAIL 5

ACCESS HOLE



DETAIL 6

POLE BASE

CITY OF PHILADELPHIA

DEPARTMENT OF STREETS

D - POLE

DATE 11/07/05 SHEET 2 OF 2

REVISED 3/01/15

APPROVED: V.L.F.

TE0201